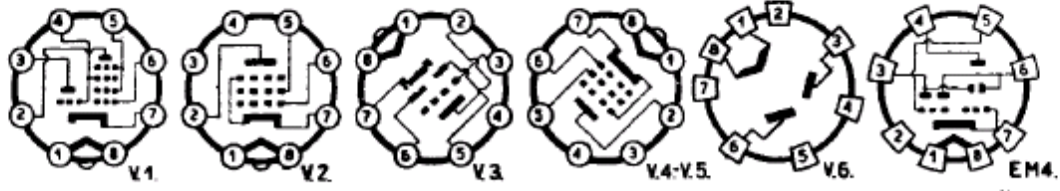
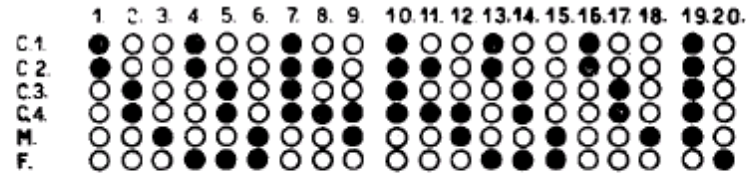
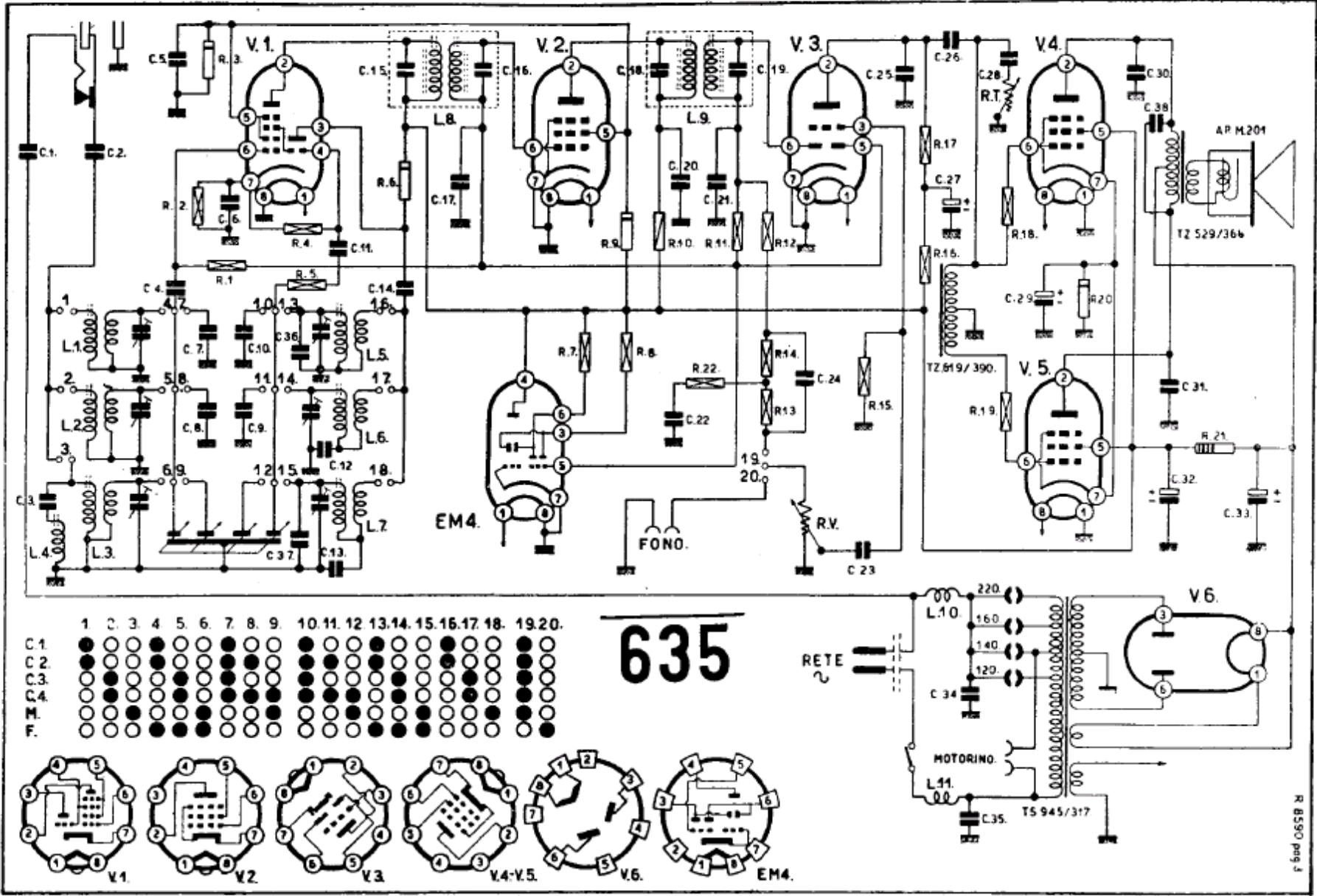


C 1	2 000 pF
C 2	1 000 "
C 3	200 "
C 4	200 "
C 5	100.000 "
C 6	25.000 "
C 7	20 "
C 8	120 "
C 9	120 "
C 10	20 "
C 11	50 "
C 12	4 000 "
C 13	400 "
C 14	200 "
C 15	200 "
C 16	200 "
C 17	50.000 "
C 18	200 "
C 19	200 "
C 20	10.000 "
C 21	200 "
C 22	5.000 "
C 23	5.000 "
C 24	500 "
C 25	200 "
C 26	100.000 "
C 27	8 MF
C 28	25.000 pF
C 29	50 MF
C 30	2.000 pF
C 31	2.000 "
C 32	16 MF
C 33	16 "
C 34	5.000 pF
C 35	5.000 "
C 36	10 "
C 37	15 "
C 38	1 000 "

R 1	1 MΩ
R 2	160 Ω
R 3	31,5 KΩ
R 4	47 KΩ
R 5	100 Ω
R 6	31,5 KΩ
R 7	2,2 MΩ
R 8	2,2 MΩ
R 9	31,5 KΩ
R 10	15 KΩ
R 11	2,2 MΩ
R 12	47 KΩ
R 13	0,1 MΩ
R 14	0,1 MΩ
R 15	22 MΩ
R 16	0,1 MΩ
R 17	15 KΩ
R 18	22 KΩ
R 19	22 KΩ
R 20	160 Ω
R 21	4 000 Ω
R 22	0,1 MΩ



FIMI S. A. - PHONOLA - Mod. 635 - 5 gamme d'onda: Corte I da 13 a 22 m. Corte II da 20,8 a 27,3. Corte III da 27 a 48 m. Corte IV da 45,5 a 80 m. Medie da 183 a 577 m. Media frequenza 470 kc. Tensione placche finali 350 volt. Consumo 70 watt. Potenza d'uscita 10 watt. Per funicella scala v. mod. 421.